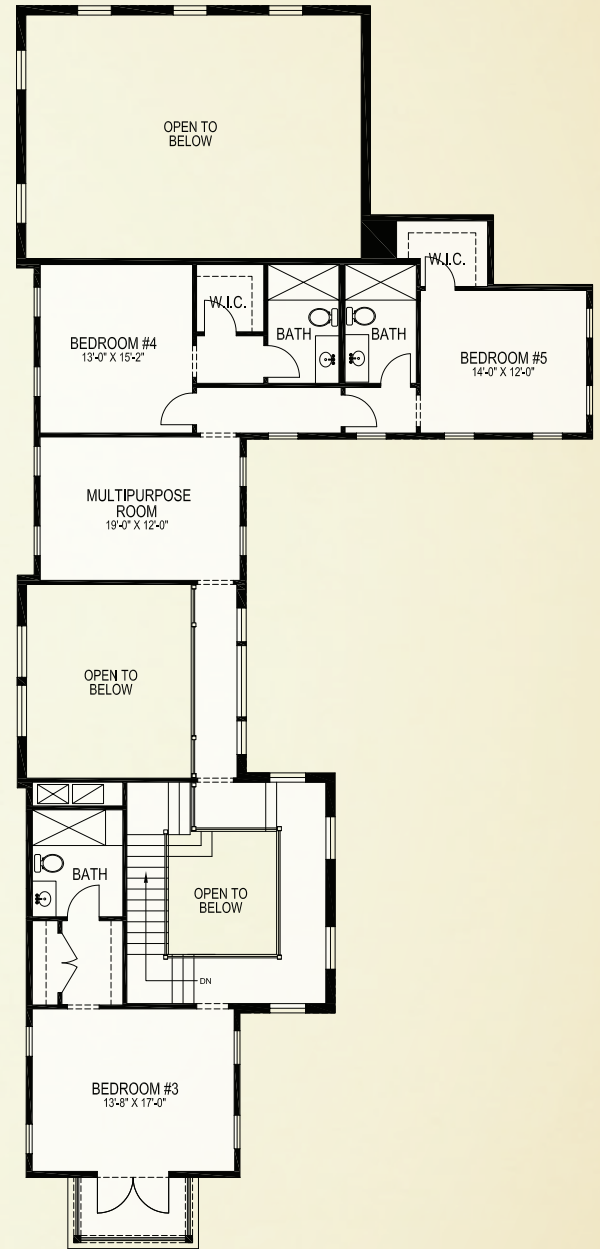


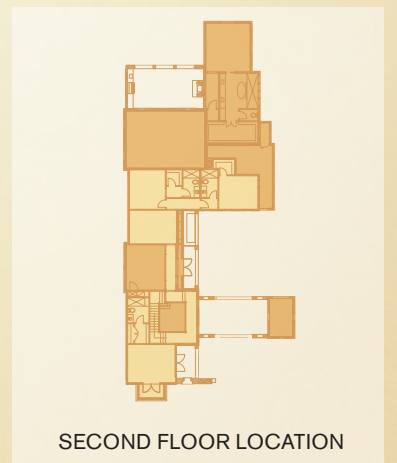
SYMPHONY GROVE DRIVE

FIRST FLOOR



SECOND FLOOR

First Floor A/C Living	3,186
Second Floor A/C Living	1,511
Total A/C Living	4,697 Sq. Ft.
Garage	601
Cart Storage	150
Porte Cochere	365
Covered Porches	191
Outdoor Living	437
Total Square Feet	6,441 Sq. Ft.



SECOND FLOOR LOCATION



LUSKE

Symphony Grove Lot 11 ▪ Goehring & Morgan Construction, Inc.



GOLDEN OAK REALTY

10501 DREAM TREE BOULEVARD, GOLDEN OAK, FLORIDA 32836

407.939.5577 (MAIN) 📞 407.938.9999 (FAX) 📧 DISNEYGOLDENOAK.COM



Illustrations are artist depictions only and may differ from completed improvements. Artist rendering may not reflect the actual details or landscaping of the finished home. Builder reserves the right to make changes to these plans, specifications, dimensions, and elevations without prior notice. Builder lot assignments are based on current development plans which are subject to change without notice. Plans are presented as Concept plans only and will require additional design reviews as required by the Architectural Control Board (ACB). All plans must receive final approval by the ACB before being built. Dimensions are subject to change without notice. See a sales associate for complete and current information. Printed 7/2018. ©Disney